



Office of
Emergency
Management

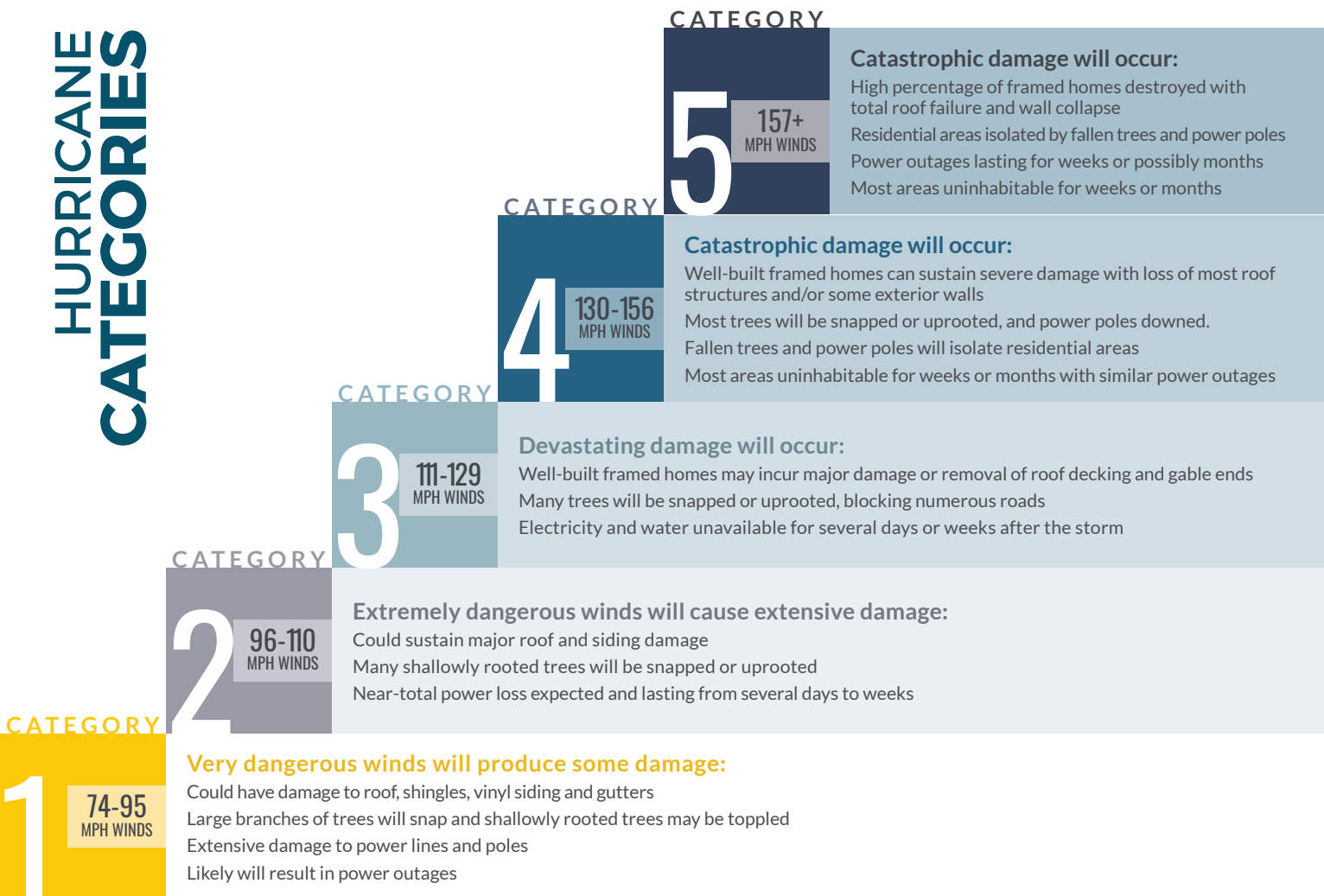
www.lakecountyfl.gov
352-343-9420

Learning About

HURRICANES



HURRICANE CATEGORIES



HURRICANE & TROPICAL STORM TERMS

Tropical Disturbance

An area of showers and thunderstorms that may have a slight cyclonic circulation (counter-clockwise) and maintains its identity for at least 24 hours.

Tropical Depression

A storm system displaying a noticeable circulation with maximum sustained wind speeds of 38 mph.

Tropical Storm

A storm system with sustained winds of 39 to 73 mph. When reaching tropical storm strength, a storm is given a name to aid in tracking.

Hurricane Watch

Issued by the National Weather Service when there is a threat of hurricane conditions developing in 24-36 hours. Families should begin enacting their hurricane preparations.

Hurricane Warning

Issued when winds of 74 mph or higher are expected within 24 hours. Families should complete their hurricane preparations.

DURING A HURRICANE WATCH

Listen to a battery-operated NOAA weather radio and news reports on television and AM/FM radio.

Recheck supplies in disaster-supply kit.

Fill gas tanks in vehicles.

Bring in outdoor objects such as lawn furniture, toys and garden tools, and anchor objects that cannot be brought inside.

Review family disaster plan.

Moor boat in safe area or take out of water.

DURING A HURRICANE WARNING

Closely monitor battery-operated weather radio and news reports on television and AM/FM radio.

Finish installing storm shutters and storing loose objects on property.

Turn refrigerator and freezer to coldest setting.

Secure outdoor objects such as lawn furniture that could blow away or cause damage or injury.

Residents of manufactured homes should check tie downs and evacuate.

Store water in bathtubs and jugs for flushing toilets.

Store valuables and important documents in waterproof containers.