



LAKE COUNTY OFFICE OF EMERGENCY MANAGEMENT

EMERGENCY MANAGEMENT

“Emergency management is the managerial function charged with creating the framework within which communities reduce vulnerability to hazards and cope with disasters.”

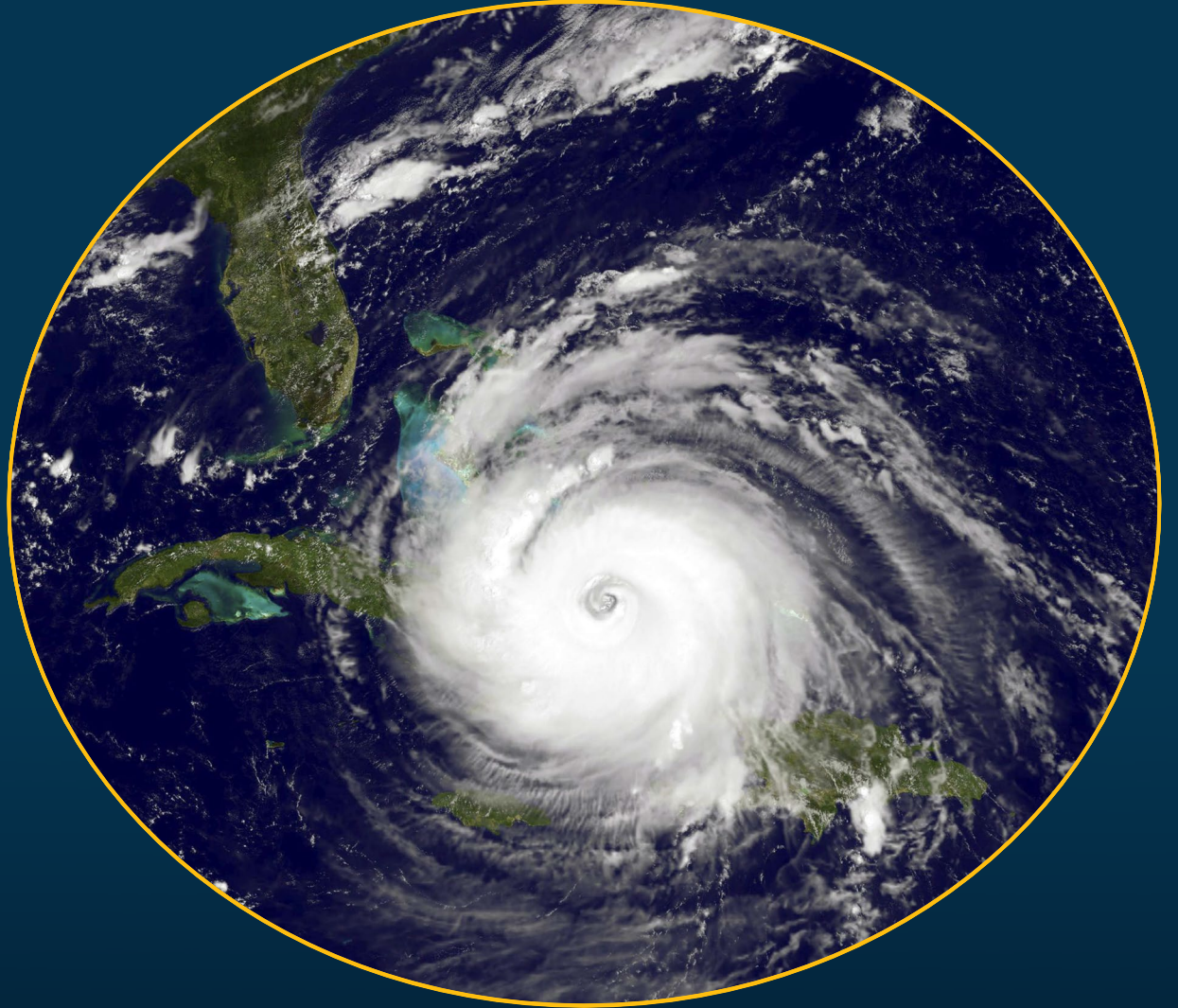


FEMA

EMERGENCY MANAGEMENT

GOALS

- Protect Life
- Protect Property
- Protect the Environment





EMERGENCY MANAGEMENT

OUR MISSION

Prepare and provide for the health, welfare, and safety of the people, visitors and employees of Lake County from the effects of man-made, natural, or technological disasters.

EMERGENCY MANAGEMENT





EMERGENCY OPERATIONS CENTER



EMERGENCY OPERATIONS CENTER

ECOC

- ❖ Emergency Management
- ❖ Communications Center
 - Lake County Sherriff
 - Lake County Fire Rescue
 - Lake County EMS





EOC ACTIVATION LEVELS

Level IV – Daily Operations

Level III – Enhanced Monitoring

Increase in posture. OEM staff are actively monitoring a threat or incident.

Level II – Partial Activation

Incident determines staffing of specific ESFs and positions
Operational hours vary

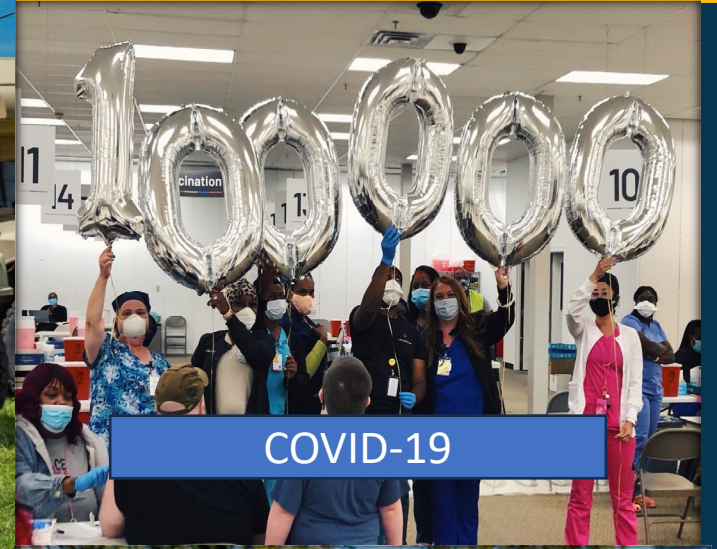
Level I – Full Activation

All ESFs and positions staffed
24-hour operations

HISTORICAL ACTIVATIONS



Hurricane Irma



COVID-19



Groundhog Day Tornadoes



Blue Rhino Explosion



Hurricane Ian

RECENT ACTIVATIONS



COMMUNITY PROGRAMS

- Faith-based partnerships
- Community Emergency Response Teams (CERT)
- Hurricane Expo
- Public Safety Event Planning





EMERGENCY ALERTING



Alertlake.com



HURRICANE SAFETY

HURRICANE TRIVIA

- What is the most popular food item(s) purchased before a hurricane?

Beer



Extra Fact: Under a Declared Local State of Emergency alcohol sales may be suspended.

HURRICANE TRIVIA

- What is the second most popular food item(s) before a hurricane?

Strawberry
Pop-Tarts



Extra Fact: Food for your 3-5 day emergency kit should be non-perishable, calorie rich and able to be stored without refrigeration and consumed without cooking.

HURRICANE TRIVIA

- What is predicted to be the scarcest commodity post-hurricane?

Gasoline



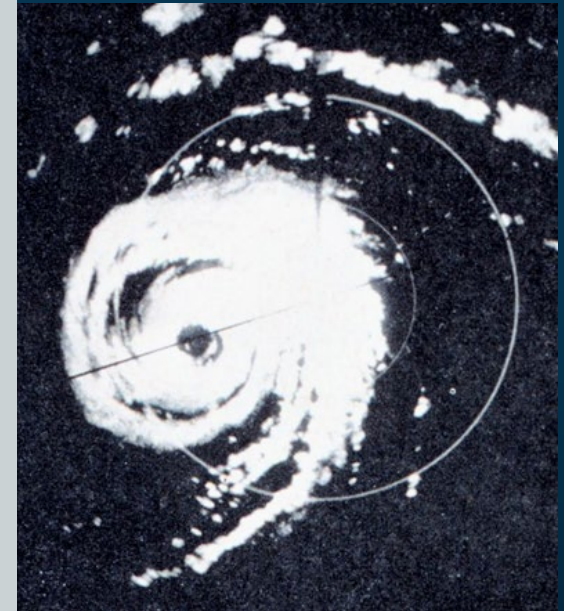
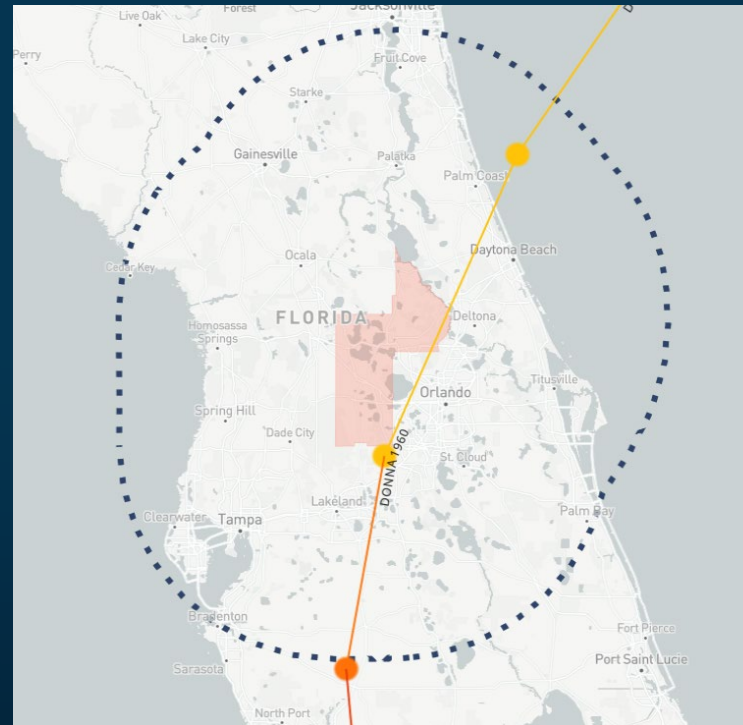
Extra Fact: A State of Emergency declared by the Governor activates Florida's price gouging law, which freezes the price of essential commodities (ice, water, food, gasoline, lumber, generators, flashlights) up to 60 days.

HURRICANE TRIVIA

- When was the last time Lake County experienced sustained hurricane force winds (>74MPH)?

Hurricane Donna:
September 10-11, 1960

Extra Fact: Hurricane Donna was the strongest hurricane formed during the 1960 hurricane season.



HURRICANE SEASON



TROPICAL CYCLONE CATEGORIES

- Tropical Depression
- Tropical Storm
- Hurricane
- Major Hurricane



TROPICAL CYCLONE CATEGORIES



Cat 1



Cat 2



Cat 3



Cat 4



Cat 5

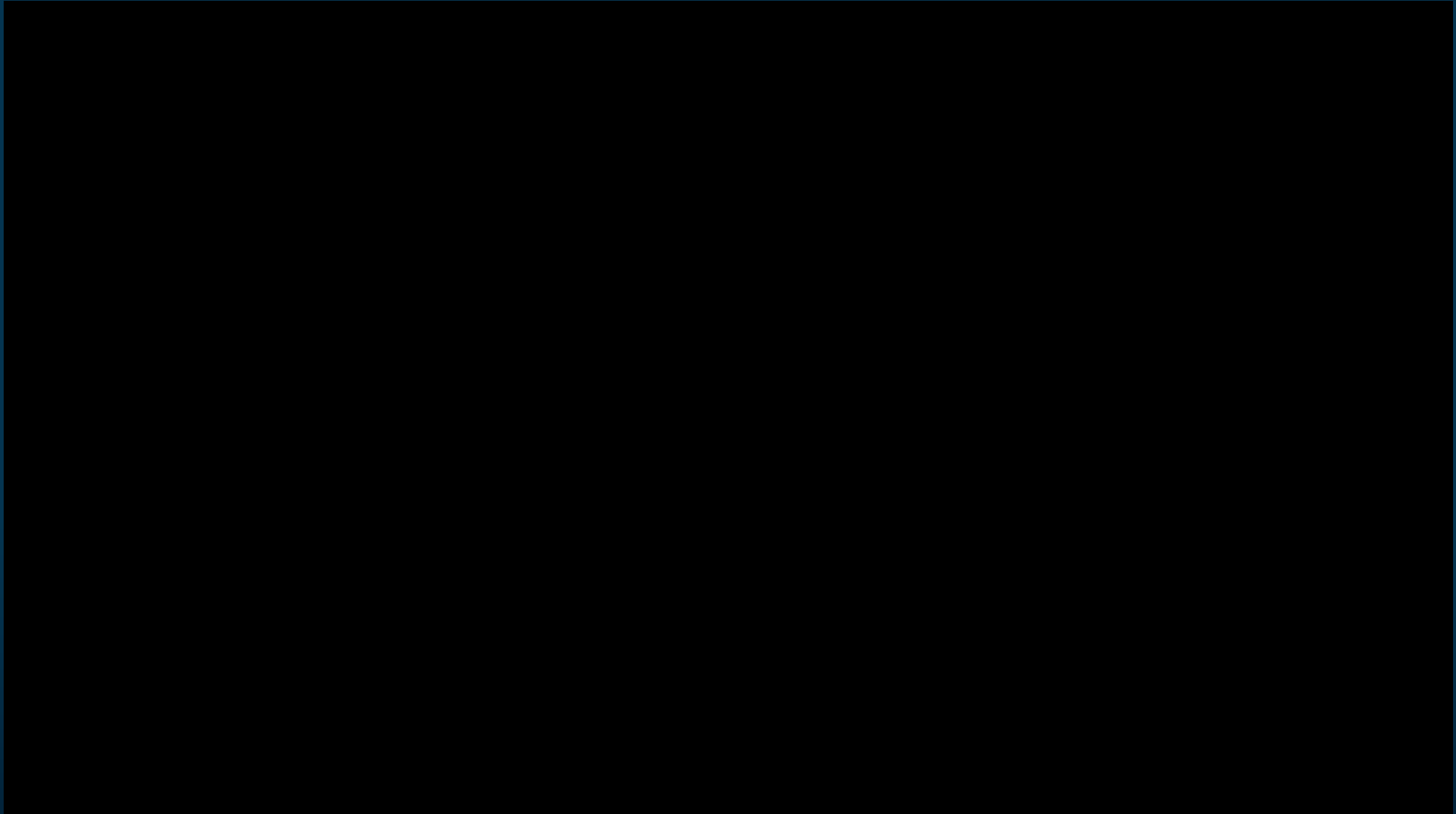
TROPICAL CYCLONE CATEGORIES

- Tropical Depression
- Tropical Storm – 39MPH
- Hurricane
- Major Hurricane

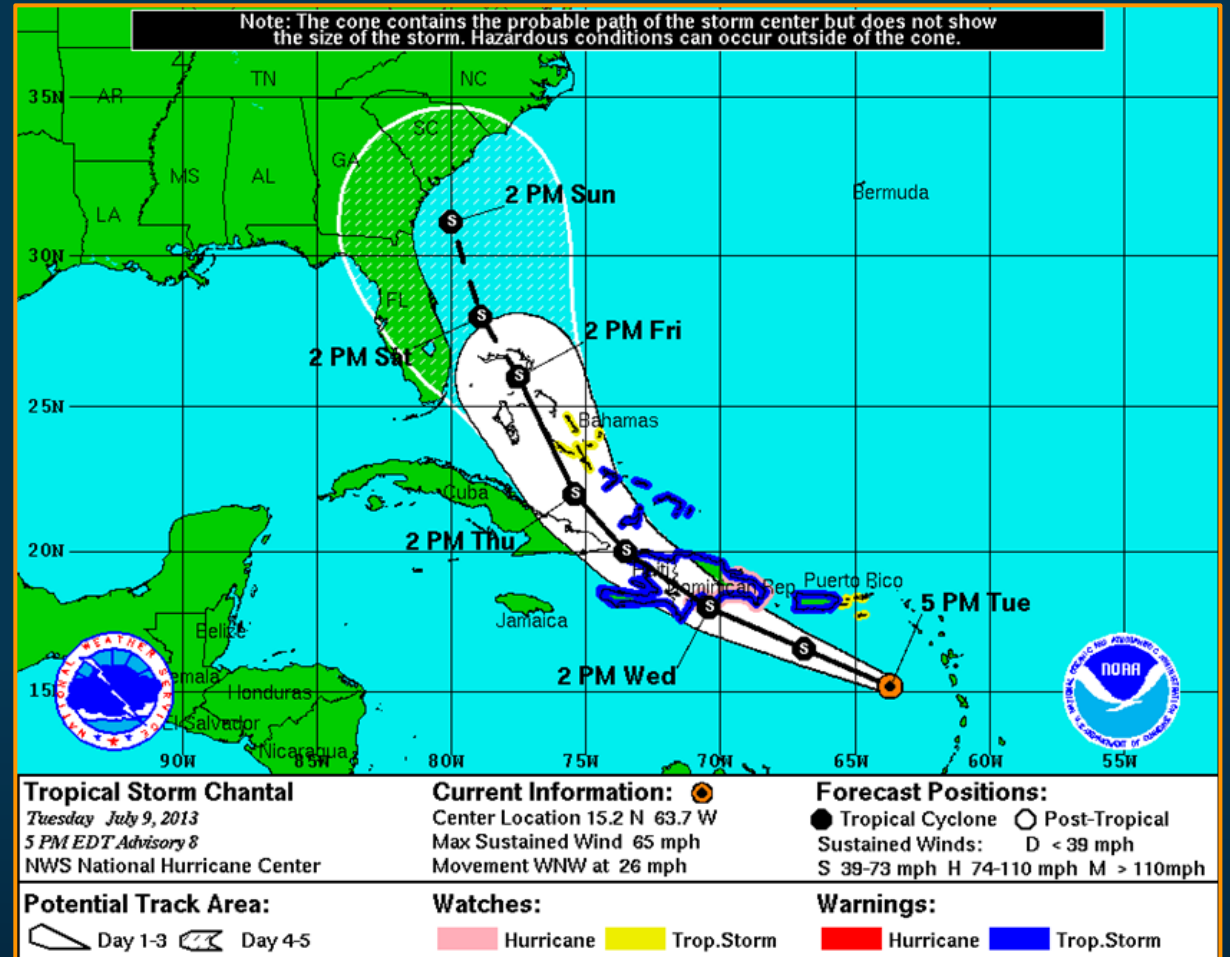




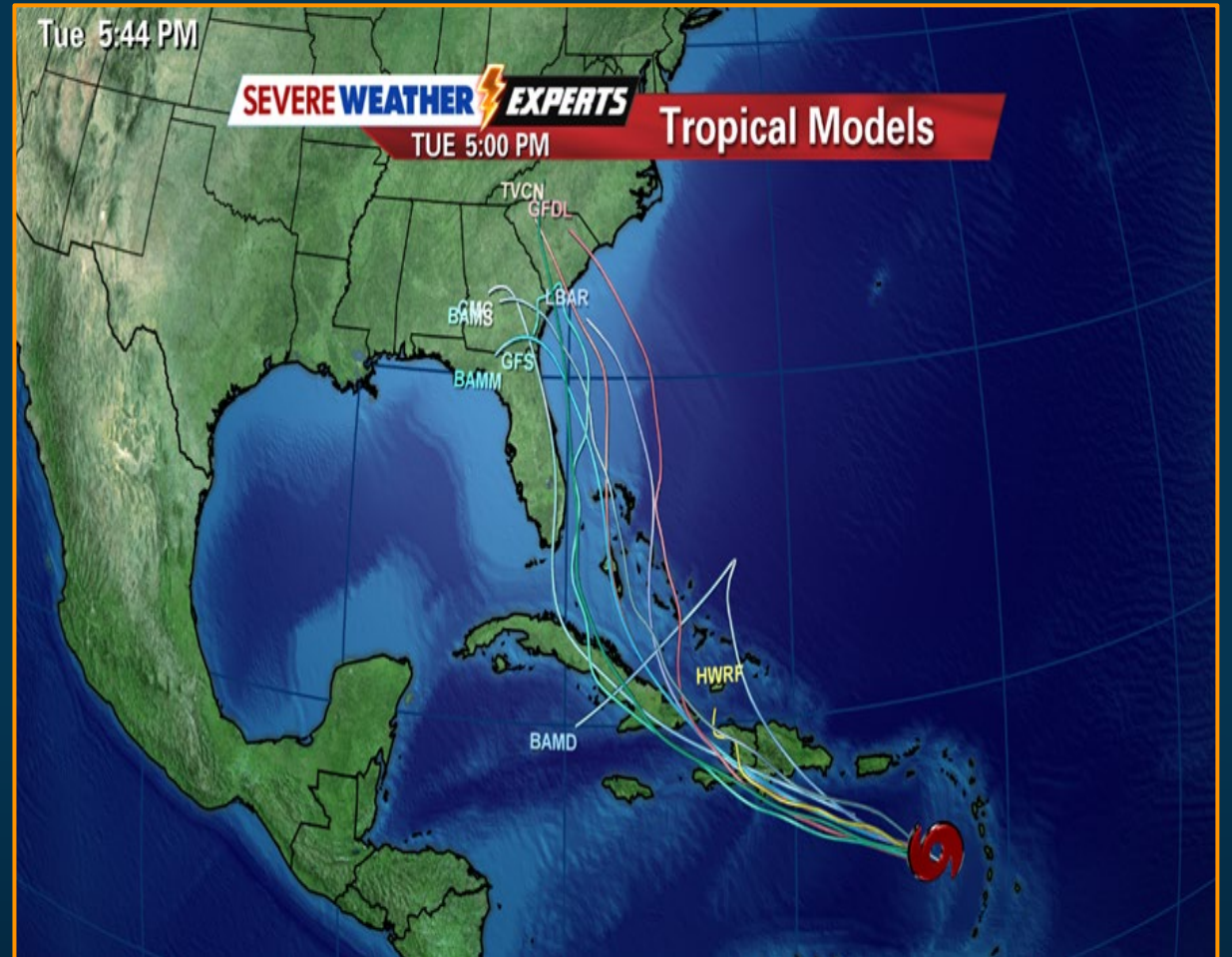
TROPICAL CYCLONE CATEGORIES



“Cone of uncertainty”



“Spaghetti Models”



Watches

Issued by the National Hurricane Center **48 hours** prior to expected onset of conditions somewhere within the specified area in association with a tropical, subtropical, or post-tropical cyclone

Warnings

Issued by the National Hurricane Center **36 hours** prior to expected landfall somewhere within the specified area in association with a tropical, subtropical, or post-tropical cyclone

Watches

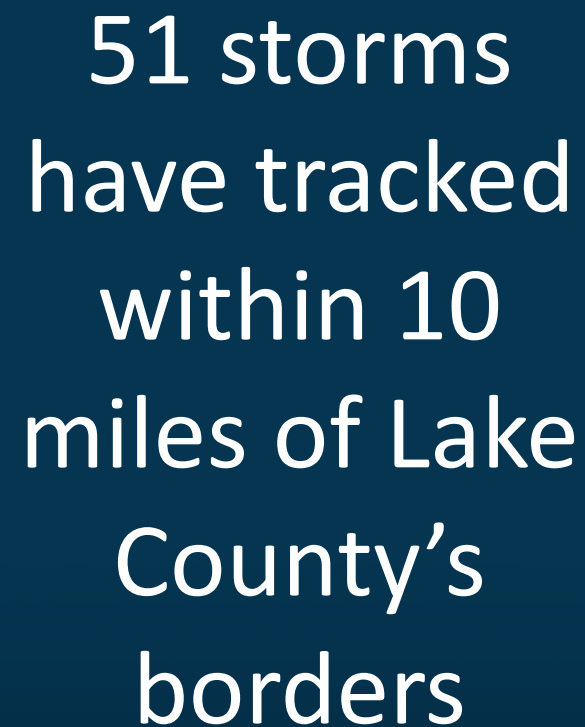


TACO WATCH

Warnings



TACO WARNING





2025 HURRICANE SEASON



2025 HURRICANE SEASON NAMES

Andrea

Fernand

Karen

Pablo

Wendy

Barry

Gabrielle

Lorenzo

Rebekah

Chantal

Humberto

Melissa

Sebastien

Dexter

Imelda

Nestor

Tanya

Erin

Jerry

Olga

Van



2025 HURRICANE SEASON FORECAST

- Forecasted to be an above-normal season
- Colorado State University
 - 17 named storms
 - 9 hurricanes
 - 4 major hurricanes

2025 FORECAST AS OF 3 APRIL 2025		
Forecast Parameter	CSU Forecast	1991–2020 Average
Named Storms (NS)	17	14.4
Named Storm Days (NSD)	85	69.4
Hurricanes (H)	9	7.2
Hurricane Days (HD)	35	27.0
Major Hurricanes (MH)	4	3.2
Major Hurricane Days (MHD)	9	7.4
Accumulated Cyclone Energy (ACE)	155	123
ACE West of 60°W	93	73
Net Tropical Cyclone Activity (NTC)	165	135



HOW TO PREPARE

✓ Emergency Kit Checklist +

Use this checklist of items suggested by the **American Red Cross** to put together a hurricane preparedness emergency kit.



☐
Nonperishable
food items



☐
Tape



☐
Emergency
survival
blanket



☐
Towels



☐
Rain
poncho



☐
Water



☐
First
aid kit



☐
Flashlight



☐
Multi tool



☐
Batteries



☐
NOAA
weather
radio



☐
Personal
hygiene
items

Layout by BRONWYN COFFEEN/Staff Artist

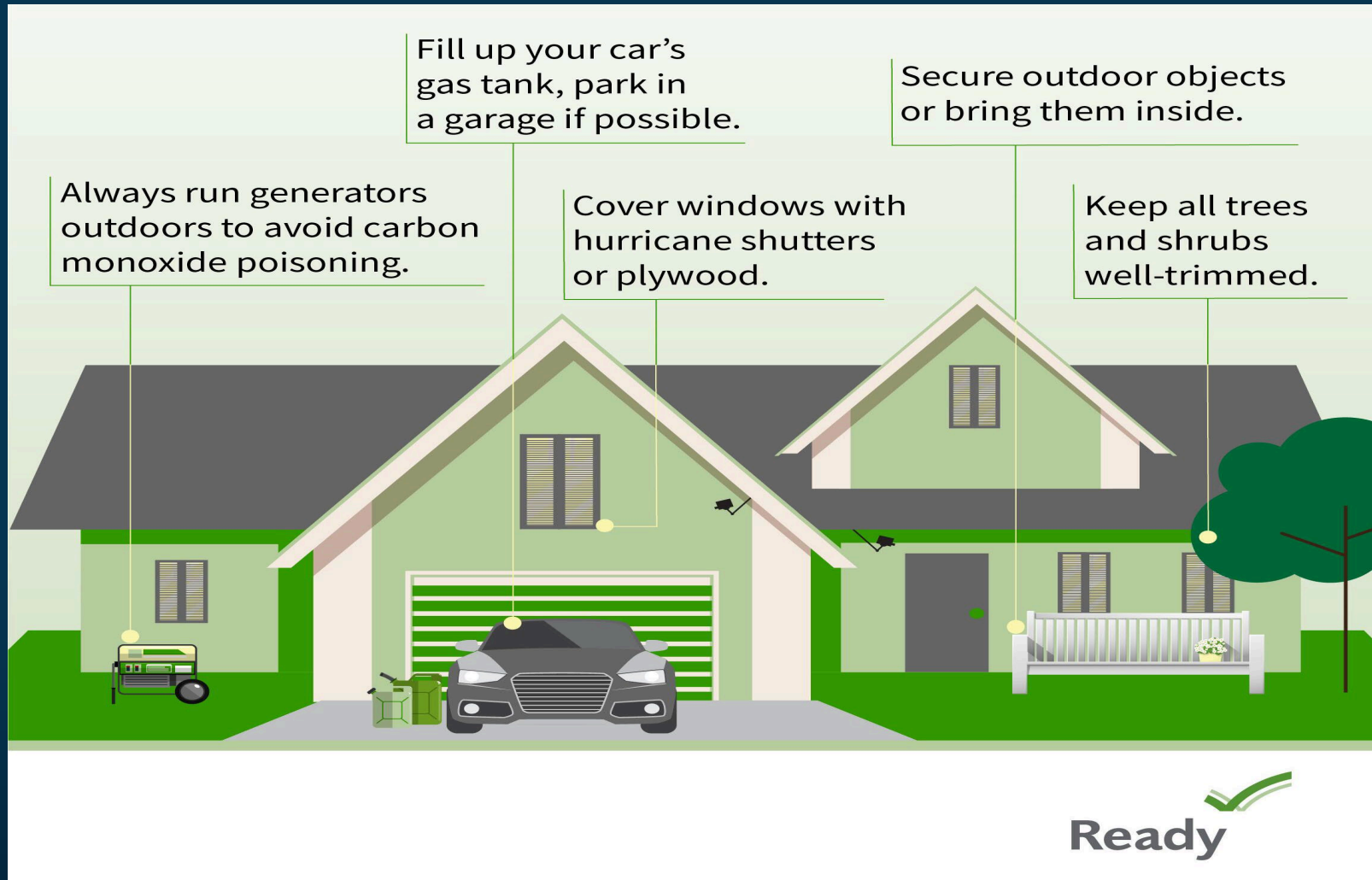


HOW TO PREPARE

- Special supplies for children and seniors
- Dietary supplements/baby formula
- Diapers/wet wipes
- Spare eyeglasses
- Hearing aid batteries
- Wheelchair batteries
- Oxygen



HOW TO PREPARE





- Know Your Risk
- Have an Evacuation Plan
- Communication



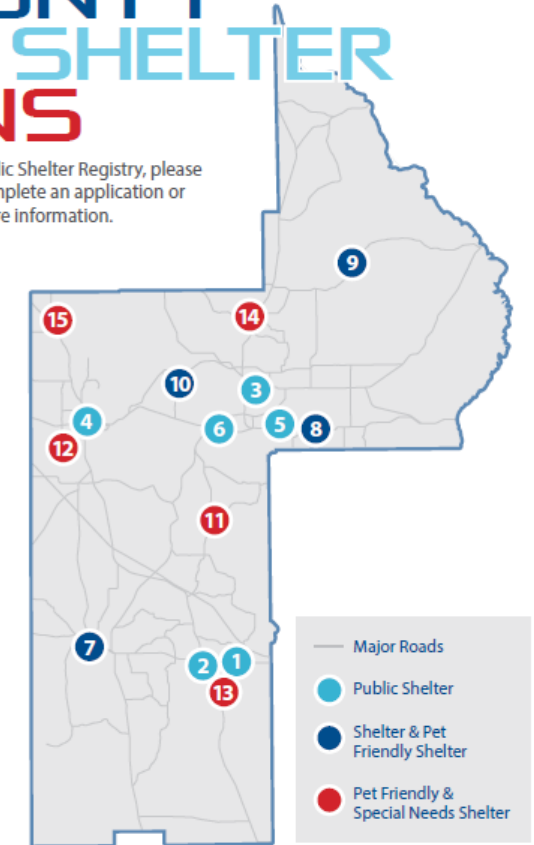
1. East Ridge High
2. East Ridge Middle
3. Eustis High
4. Leesburg High
5. Mount Dora High
6. Tavares High
7. Mascotte Elementary
8. Round Lake Elementary
9. Spring Creek Elementary
10. Treadway Elementary

11. Astatula Elementary
12. Leesburg Elementary
13. Lost Lake Elementary
14. Umatilla Elementary
15. Villages Elementary

LAKE COUNTY PRIMARY SHELTER LOCATIONS

To register for the Special-Needs Program or the Public Shelter Registry, please visit us at www.lakecountyfl.gov/specialneeds to complete an application or call the Shelter Registry Line at 352-742-4850 for more information.

- 1 **EAST RIDGE HIGH**
13322 Excalibur Road, Clermont
- 2 **EAST RIDGE MIDDLE**
13201 Excalibur Road, Clermont
- 3 **EUSTIS HIGH**
1300 E. Washington Ave., Eustis
- 4 **LEESBURG HIGH**
1401 Yellow Jacket Way, Leesburg
- 5 **MOUNT DORA HIGH**
700 N. Highland St., Mt. Dora
- 6 **TAVARES HIGH**
603 N. New Hampshire Ave., Tavares
- 7 **MASCOTTE ELEMENTARY**
460 Midway Ave., Mascotte
- 8 **ROUND LAKE ELEMENTARY**
31333 Round Lake Road, Mt. Dora
- 9 **SPRING CREEK ELEMENTARY**
44440 Spring Creek Road, Paisley
- 10 **TREADWAY ELEMENTARY**
10619 Treadway School Road, Leesburg
- 11 **ASTATULA ELEMENTARY**
13925 Florida Ave., Astatula
- 12 **LEESBURG ELEMENTARY**
2229 South St., Leesburg
- 13 **LOST LAKE ELEMENTARY**
1901 Johns Lake Road, Clermont



- 14 **UMATILLA ELEMENTARY**
401 Lake St., Umatilla
- 15 **VILLAGES ELEMENTARY**
695 Rolling Acres Road, Lady Lake



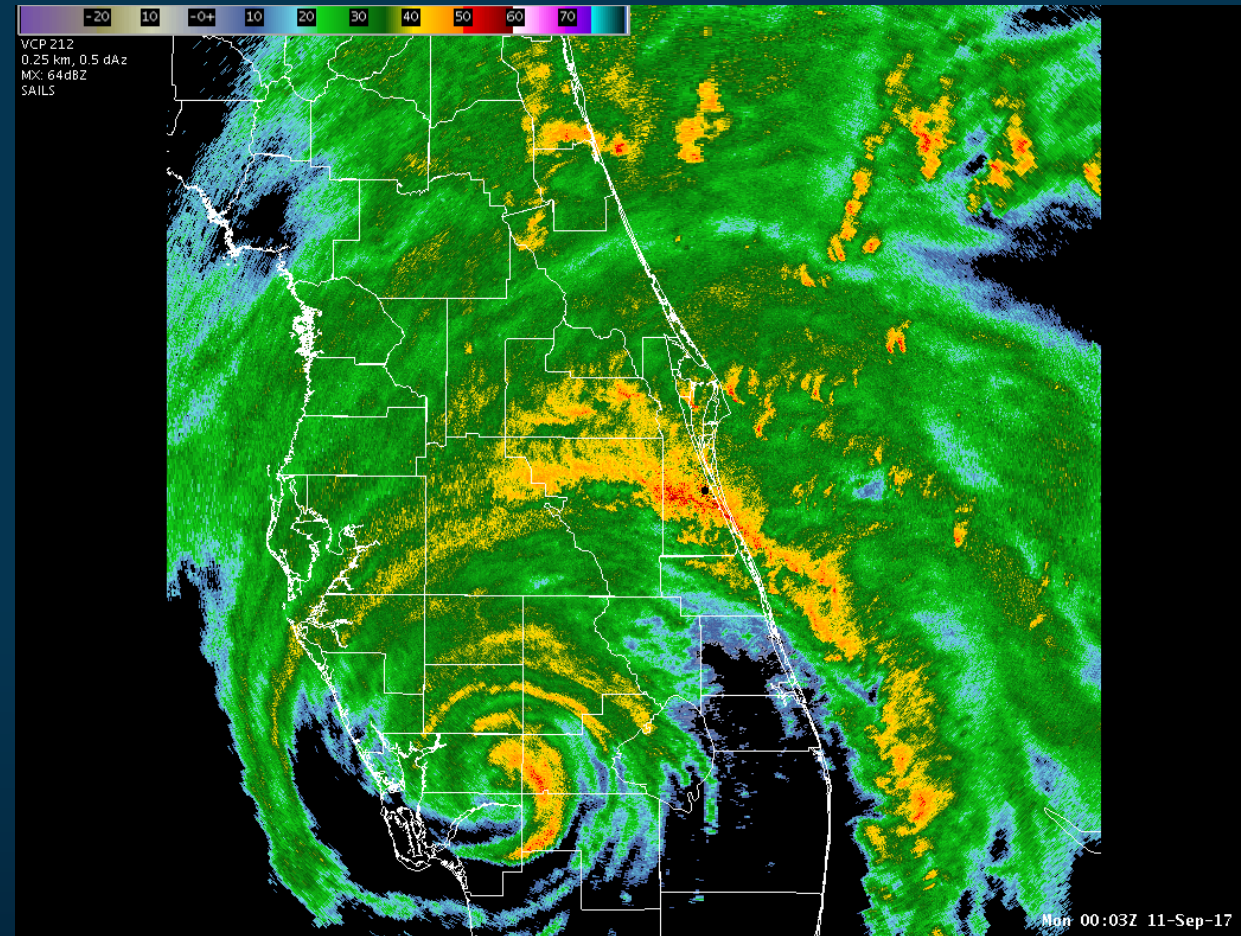
DURING THE STORM

DURING THE STORM



DURING THE STORM

- NOAA Weather Radio
- Local Media
 - Radio & TV Stations
- County website:
www.lakecountyfl.gov
- Citizens Information Line
352-253-9999



HURRICANE IRMA DOPLER RADAR IMAGE SEPT. 10, 2017 2000-2244 HRS (NWS MLB)



AFTER THE STORM

AFTER THE STORM





PREPAREDNESS RESOURCES



FEMA





OPEN DISCUSSION

