

CAPTIVA Villa

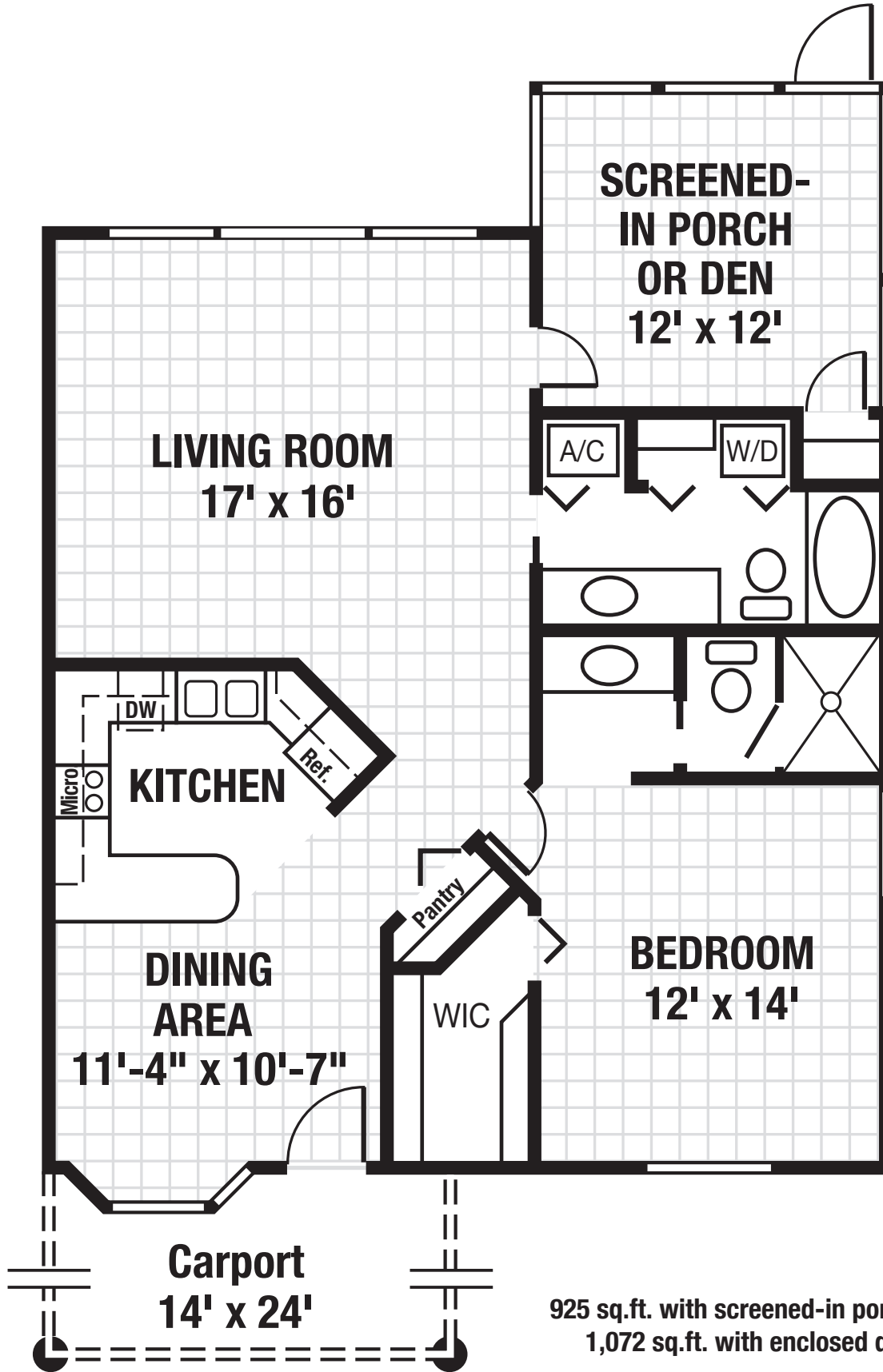
(Two Types)



"Living Your Best Life!"

(352) 385-1126

www.watermanvillage.com



925 sq.ft. with screened-in porch
1,072 sq.ft. with enclosed den

(All Dimensions are Approximate)

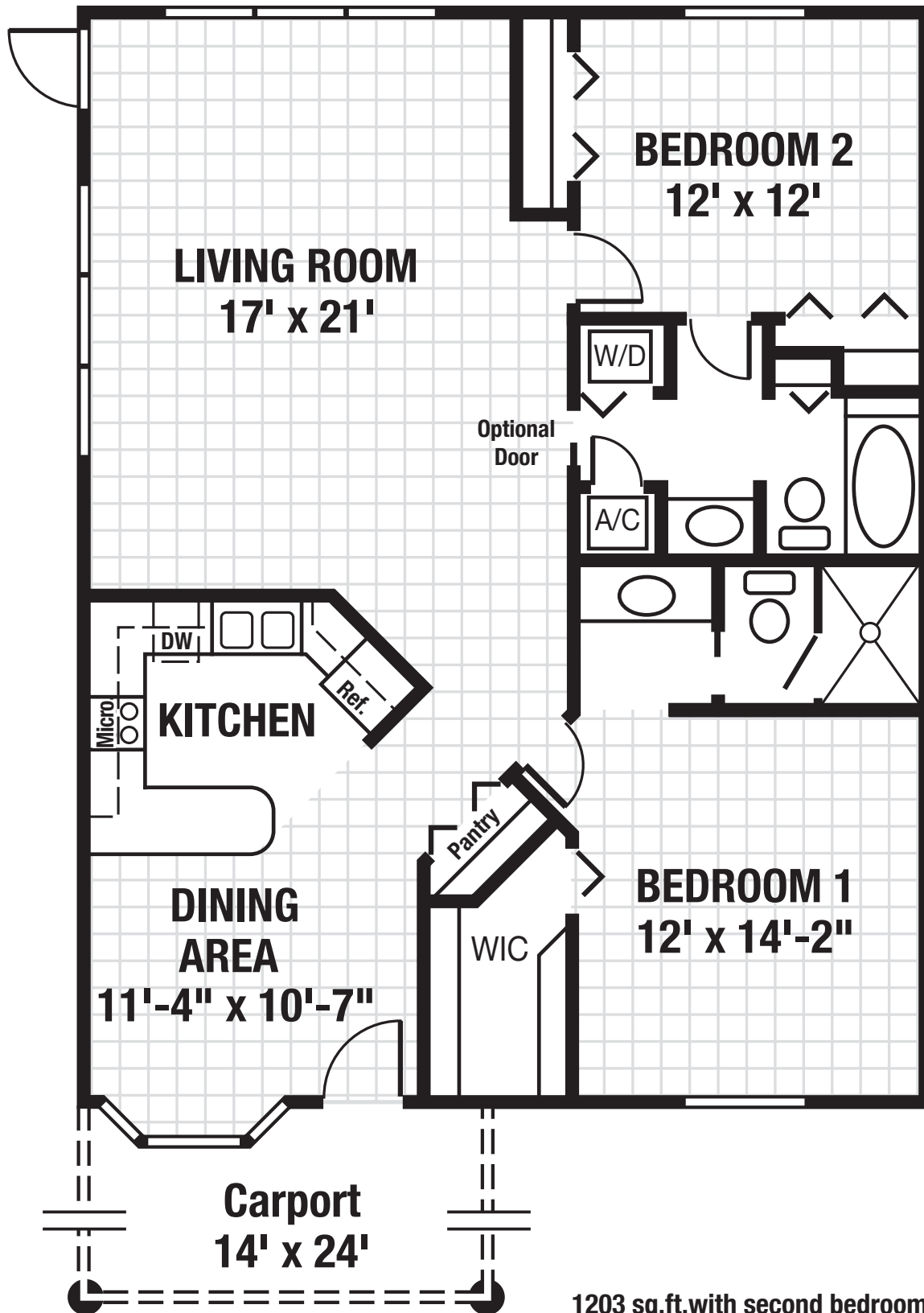
KEY WEST Villa

(Two Types)



(352) 385-1126

www.watermanvillage.com



1203 sq.ft. with second bedroom

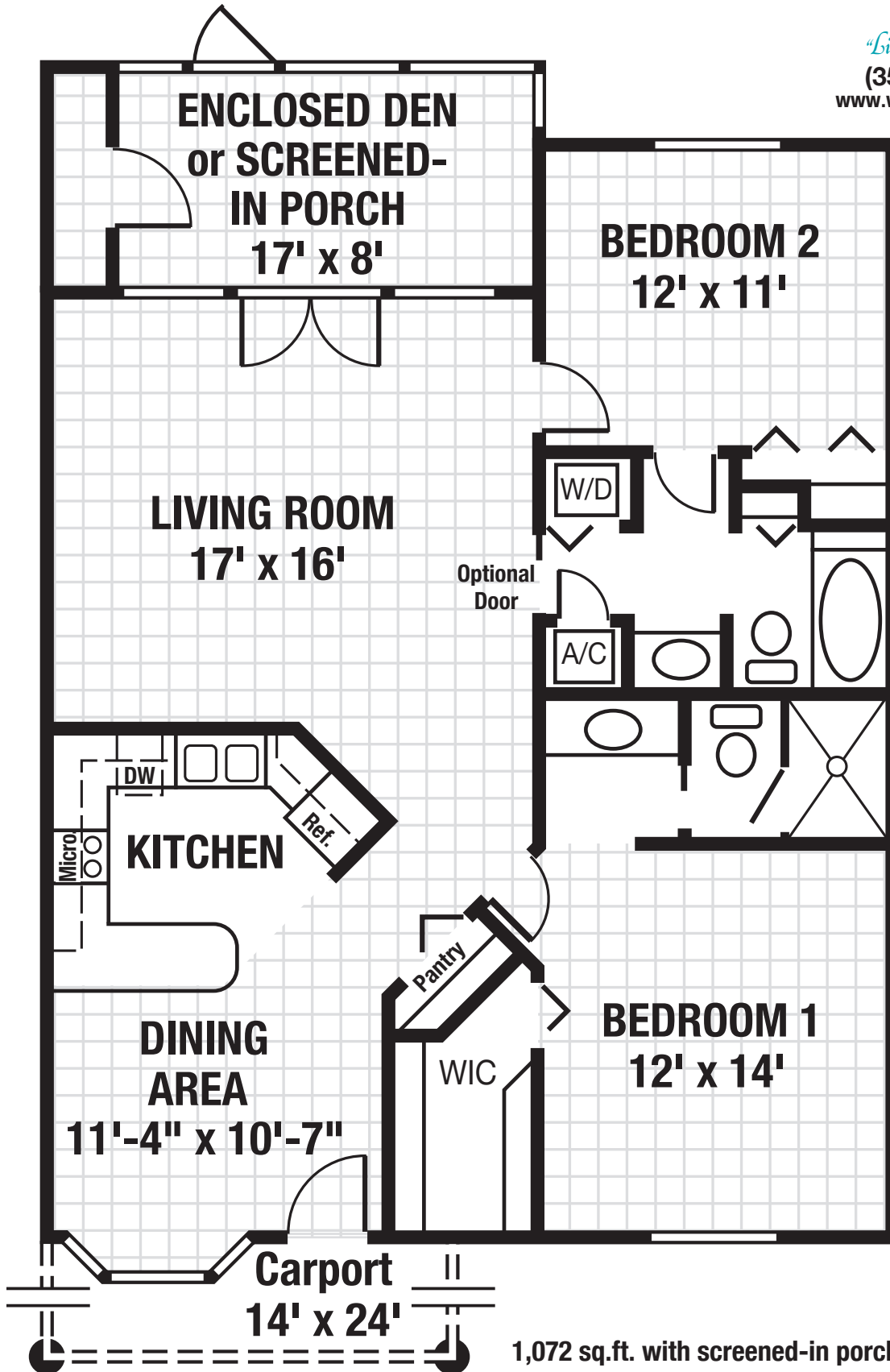
(All Dimensions are Approximate)

SABAL Villa

(Two Types)



(352) 385-1126
www.watermanvillage.com



1,072 sq.ft. with screened-in porch
1,208 sq.ft. with enclosed den

(All Dimensions are Approximate)

SANIBEL Villa

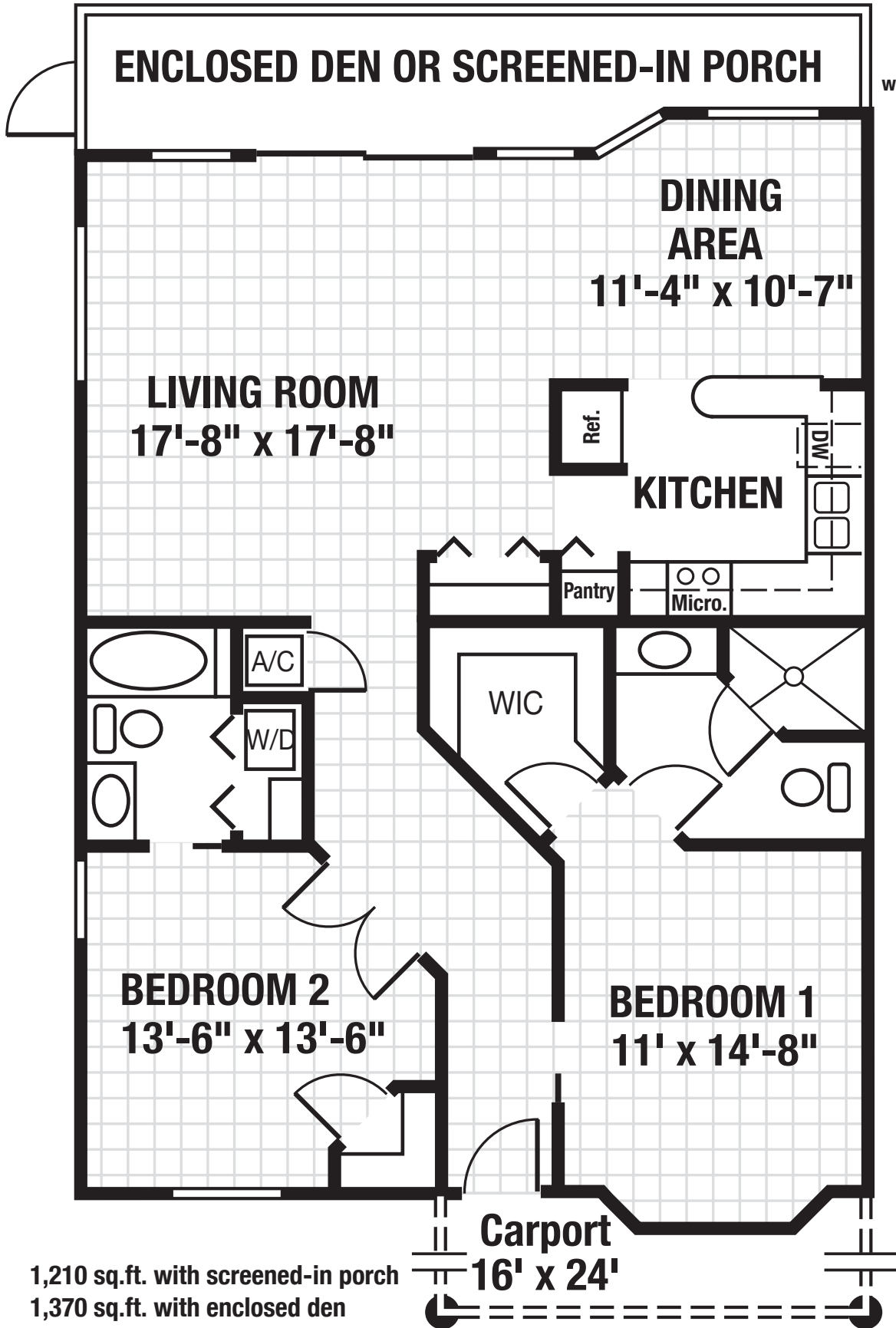
(Two Types)



"Living Your Best Life!"

(352) 385-1126

www.watermanvillage.com



1,210 sq.ft. with screened-in porch
1,370 sq.ft. with enclosed den

Carport
16' x 24'

(All Dimensions are Approximate)